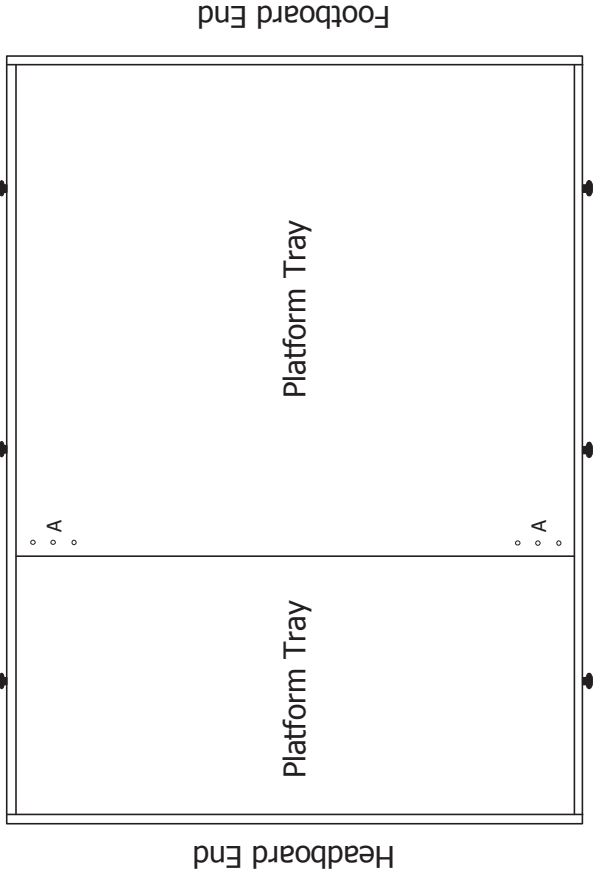




## Bed Assembly Instructions Pedestal Bed w/3, 5, or 6 drawers on each side.

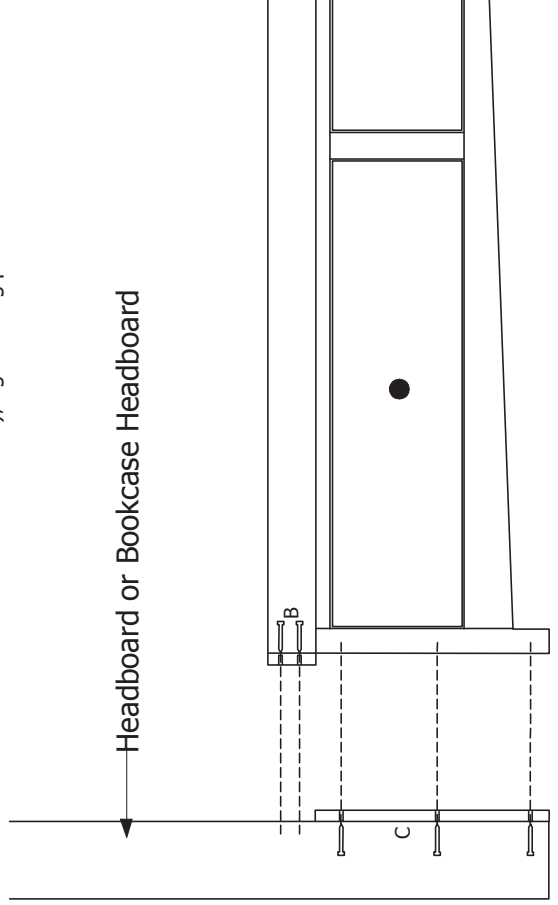
### Step-1

Arrange the 2 drawer banks back to back. Place platform trays on top of the drawer banks with the small tray at the headboard end, (Full and Twin platforms will be one piece and the pre-drilled holes should be facing the headboard). Fasten the 2 platform trays together by inserting provided screws into the two sets of pre-drilled holes in the platform (A). (King size will have three sets of holes). NOTE: Square drive drill bit is needed.



### Step-2

The headboard will fasten onto the end by inserting provided screws into the two pre-drilled holes in the rim of the platform, (B) and the three pre-drilled holes in the conversion kit (C), using a square drive drill bit, (these will screw into the drawer banks), again using provided screws.



### Step-3

Insert the end cap under the nlip of the platform tray against the drawer banks to cover the gap between the two drawer banks on the opposite end of headboard. The end cap will stay in place by itself, so no screws are required.

